

MORE THAN
20 YEARS
OF EXCELLENCE



Member of BAI



RERA No. TN/29/BUILDING/389/2023
Dated 12.09.2023 (<https://rera.tn.gov.in>)

Keys to your dream home.


MAITHREE

DEVELOPED BY



BUILDERS AND PROMOTERS



RERA No. TN/29/BUILDING/389/2023 Dated 12.09.2023 (<https://rera.tn.gov.in>)



MAITHREE

Keys to your new dream home!

GreenPro's Maithree, an uncompromising excellent place for living, ideally located in the heart of the Chennai city at Porur. Maithree offers a wide range of amenities that can make life more convenient and enjoyable.

There's something for everyone. Whether you're a young professional or a family with children, Maithree is an excellent choice for those seeking convenience and comfort within the city.

What more will you ask for when everything is within your reach? Schools, colleges, hospitals, IT/ITES companies, temples, metro stations, malls, theatres, bus stops, etc., within the reach that ensures lesser travel time, easy connectivity, and more time with family.

A timeless design that ensures a cozy living with positive vibes. An unique combination of vibrant surroundings, professional approach and an extremely high quality construction.

☆ 20 Elite Apartments

☆ Stilt + 5 Floors

☆ Covered Car Parking

☆ Lift till Terrace

☆ 100% Vaastu

☆ CCTV

☆ Power backup

☆ Secured entry

Maithree is an excellent choice for those seeking convenience and comfort within Porur, Chennai.



> About GreenPro <

GreenPro Constructions Private Limited is completely engaged design & construction services pertaining to various residential, industrial and commercial projects. These services are projects of residential buildings, projects of commercial buildings, site selection services, industrial plots and projects of shopping malls, interior designing services.

An industrial leader in the home construction business, GreenPro's focus is on providing unparalleled service to both large and small clients.

Our current project ventures include construction of a wide variety of residential buildings with the most innovative design concepts. Our experienced and dedicated team have the highest standard of service and quality.

Our design plans incorporate ample light and air ventilation, safe flooring and best safety features. We strive to provide cost effective housing solutions for everyone to afford.

During the design and construction, special preventive measures are taken into account to rule out the chances of any natural calamities.

Building Your Dreams, Making Them Last

Let's Join Hands for a better tomorrow.

GreenPro Constructions Private Limited assures best valuations for a property and high return on investment for land owners looking out for promoting their property either by Joint Venture or outright purchase.

Till date we have successfully executed several Joint Venture projects that has provided handful of returns to the owners.

> 3D Views of a Model Flat <



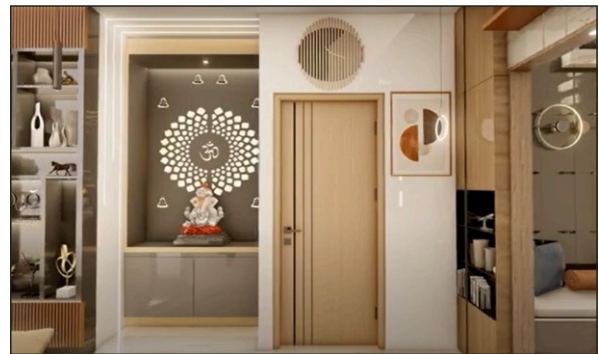
Entrance & Stairs



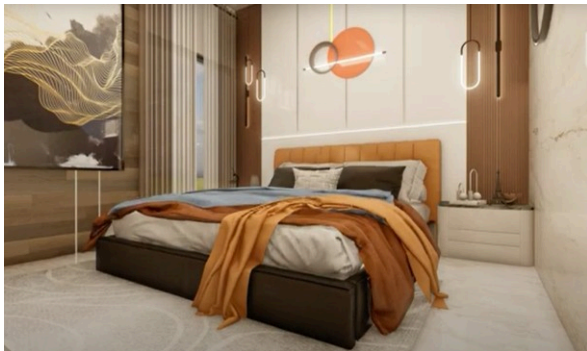
Living Room



Living Room



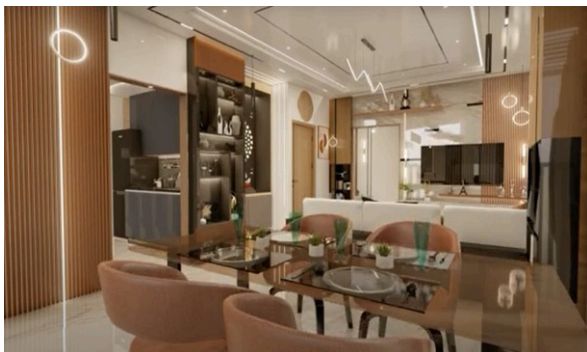
Pooja



Bed Room



Kitchen



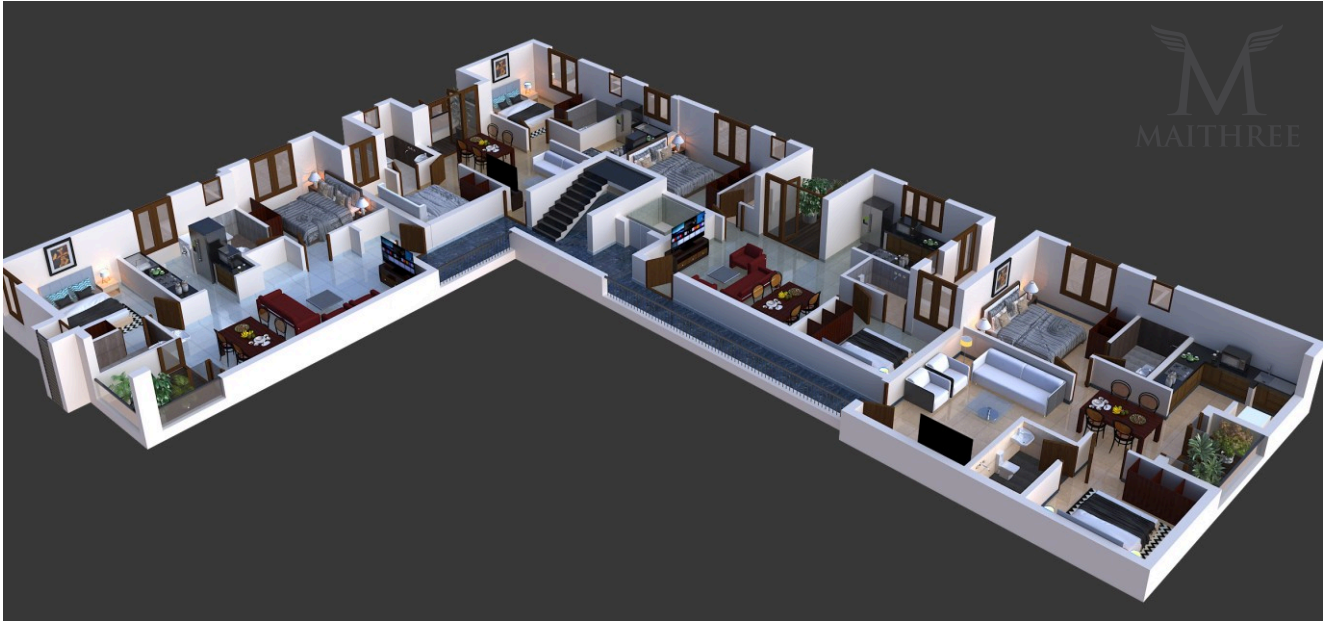
Dining Area



Balcony

This is only an artistic impression of the building interiors for understanding purpose.

> Typical Floor Plans <



4 Flats in each Floor | 5 Floors

Floor plans are in accordance with the last approved sanctioned plan.

> Typical Floor Plans <



Ground Floor & Parking Area

> Individual Floor Plans <



FLAT A | 1039 Sq. Ft.

Floor plans are in accordance with the last approved sanctioned plan.

> Individual Floor Plans <



FLAT B | 856 Sq. Ft.

Floor plans are in accordance with the last approved sanctioned plan.

Individual Floor Plans



FLAT C | 990 Sq. Ft.

Floor plans are in accordance with the last approved sanctioned plan.

> Individual Floor Plans <



FLAT D | 963 Sq. Ft.

Floor plans are in accordance with the last approved sanctioned plan.

Specifications

Structure

- RCC Framed structure designed for Earthquake resistance
- M25 grade concrete and TMT ISI branded rod

Flooring

- High-end Vitrified Tiles
- Granite for stair case
- Anti-Skid ceramic tiles in Bathroom & Service area
- Paver blocks in Car Parking & External Paving area

Dadoing

- 2 ft Glazed tiles above kitchen platform
- 7 ft Glazed tiles for all bathrooms

Doors & Windows

- Teak wood frame with both sides Teak finished flush shutters with brass fittings for main door
- Country wood frame & flush shutters for bedroom and bathroom doors
- Branded UPVC openable / sliding windows

Plumbing and Sanitary

- CP fittings - Jaquar / Parryware / equivalent
- CPVC / PVC pipes and fitting - Trubore / Finolux
- Premium white color sanitary fittings - European closet and washbasin

Electrical

- 3 Phase power supply with individual meters & modular switches
- AC points for all rooms
- Branded ISI wires and accessories
- Provision for Inverters

Painting

- Interior: Cement based putty finish and interior emulsion paints
- Exterior: Aesthetically finished exterior with weather coat paint

Kitchen

- Black granite counter top with SS sink of single bowl
- Provision for Chimney and exhaust fan

Water Supply

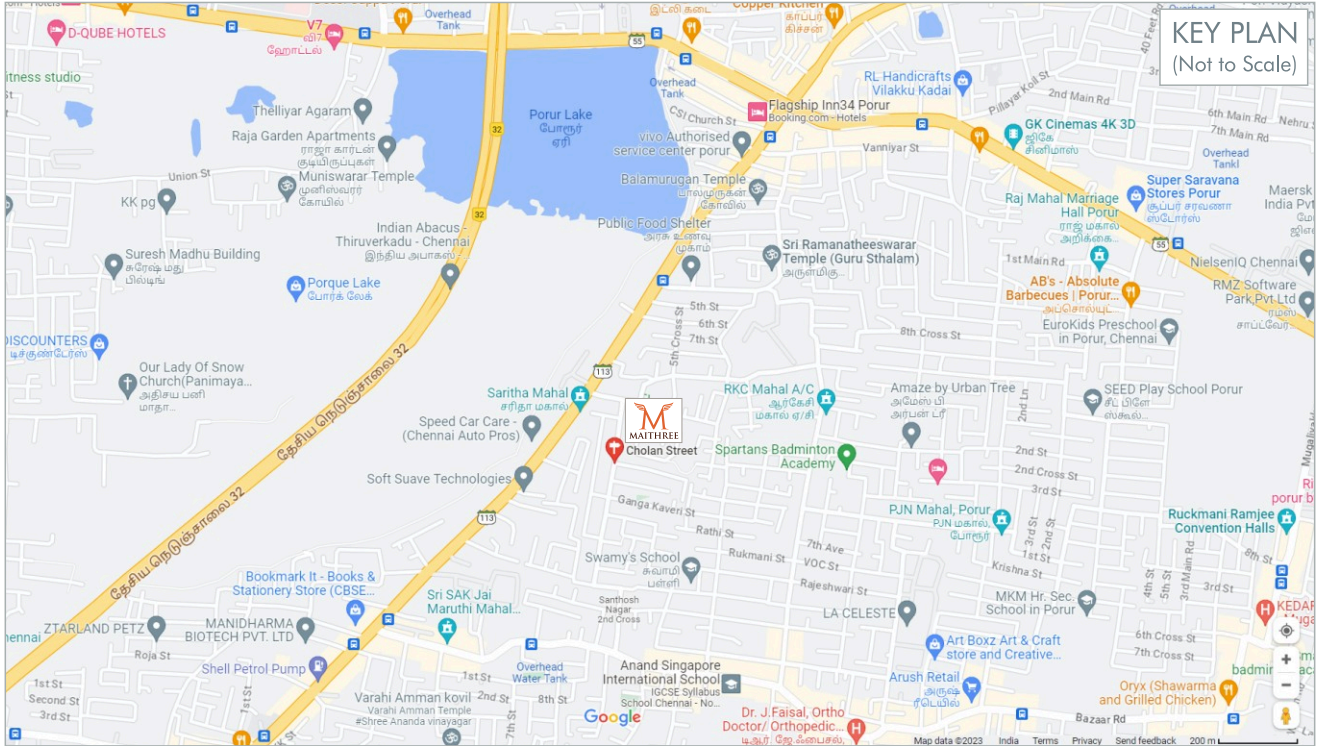
- Overhead Tank 12000 litres
- RCC Sump 24000 litres capacity
- Borewell 200 ft depth
- Rainwater harvesting
- Adequate Soak pit facilities

Common Amenities

- 24 x 7 CCTV Surveillance for common areas
- Secured door entry at the ground floor entrance
- Lift till terrace
- Power back up for common areas

Location Advantages

- 300 mtrs from Madanandapuram Main Road
- 400 mtrs from Porur to Kundrathur Main Road
- 1.1 kms from Porur Junction
- 1.2 kms from upcoming Porur Metro Station
- 2 kms Porur Saravana Stores
- 3 kms from Porur Ramachandra Hospital
- 3.3 kms from DLF IT Park
- Famous schools within 4 kms radius from the site :
 - Narayana Mission
 - Vellammal
 - PSBB Schools
- 8 kms from Chennai Airport



Site Address:

Plot No. 23 & 25 Chozhan Street, Venkatesan Nagar,
Madanandapuram, Chennai 600 125.

For enquiries, get in touch with us :

+91 91767 66166 / +91 92821 16804

GreenPro Constructions Pvt. Ltd.,
F - 22, 2nd Main Road, F Block,
3rd Floor, 3B, Palm Springs Apartments,
Anna Nagar East, Chennai 600 102.



greenproconstructions@gmail.com



www.greenproconstructions.com



www.facebook.com/GreenProConsprivateltd



www.instagram.com/greenproconstructions